

InBici

# InBici

Rivista per ciclisti, InBici Magazine, Passione sui Pedali

## NOVITÀ MAXXIS GRAVEL & BMX DTH, RECEPTOR E ALTRO ANCORA..

Maurizio Rocchi · Monday, March 14th, 2022

**Gravel e BMX sono al centro degli ultimi arrivi targati Maxxis! Dalle nuove misure delle coperture Rambler, Receptor, Re-Fuse adatti al misto strada-sterrato, sono ora disponibili anche le Maxxis DTH, pensate per BMX, street riding, pump track, skate park e slopestyle. [Richiedili subito al rivenditore più vicino a te!](#)**

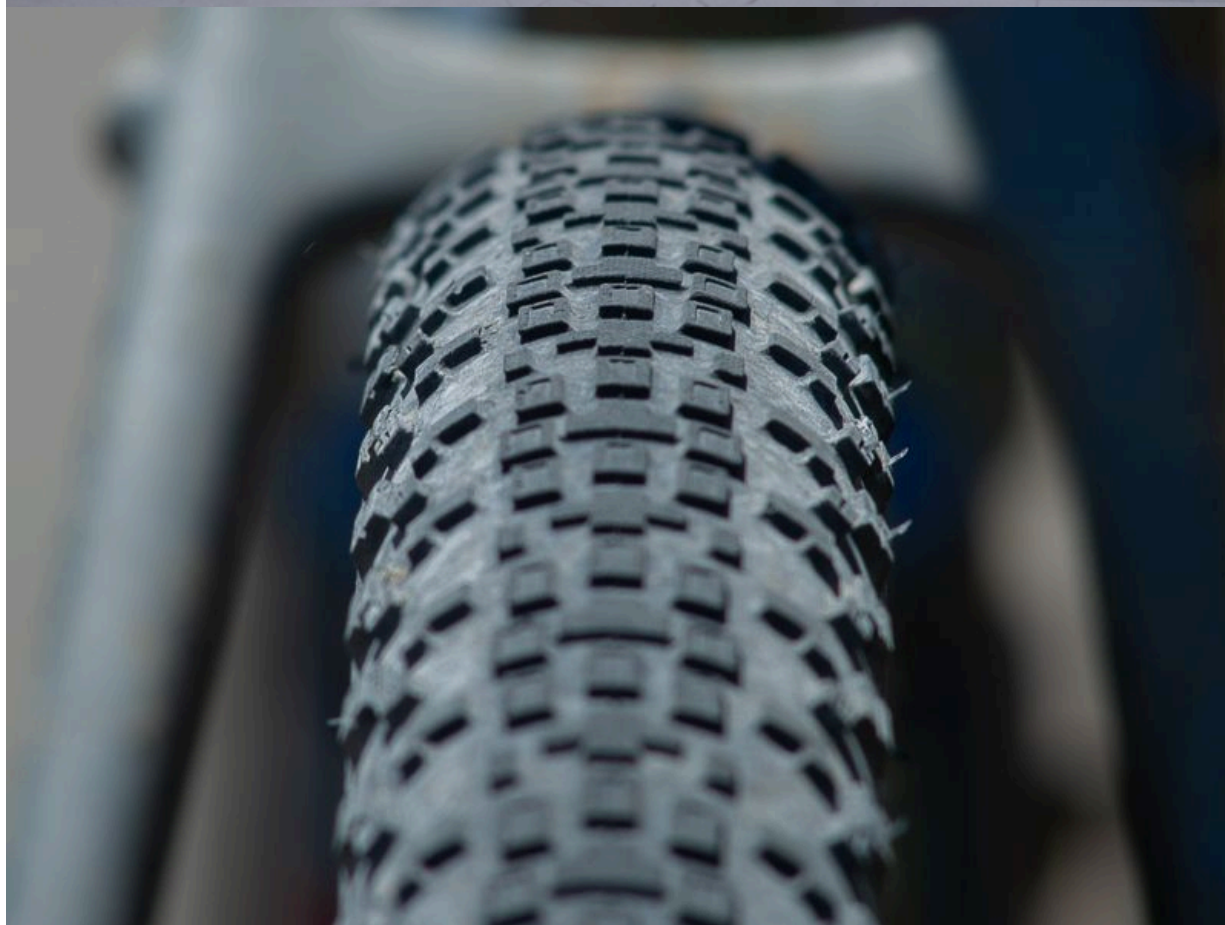
**Dai un'occhiata a tutte le ultime novità Maxxis:**

- Rambler, 650 x 47B, 120 TPI, EXO / TR (TB00172000);
- Rambler, 650 x 47B, 60 TPI, EXO / TR / Tanwall (TB00386100);
- Rambler, 700 x 38C, 60 TPI, SilkShield/ TR (TB00200800);
- Receptor, 700 x 40C, 120 TPI, EXO / TR (TB00325300);
- Re-Fuse, 650 x 47B, 60 TPI, MaxxShield (TB00193500);
- Re-Fuse, 650 x 47B, 60 TPI, MaxxShield, TR / Tanwall (TB00386200);
- DTH, 20 x 1.75, 120 TPI, EXO (TB00409800);

**[Scopri il CATALOGO MAXXIS 2022!](#)**

**[Trova il rivenditore più vicino a te!](#)**





Copyright© InBici Magazine ©Riproduzione Riservata

---

This entry was posted on Monday, March 14th, 2022 at 10:42 am and is filed under [News](#), [TECNICA](#). You can follow any responses to this entry through the [Comments \(RSS\)](#) feed. You can skip to the end and leave a response. Pinging is currently not allowed.